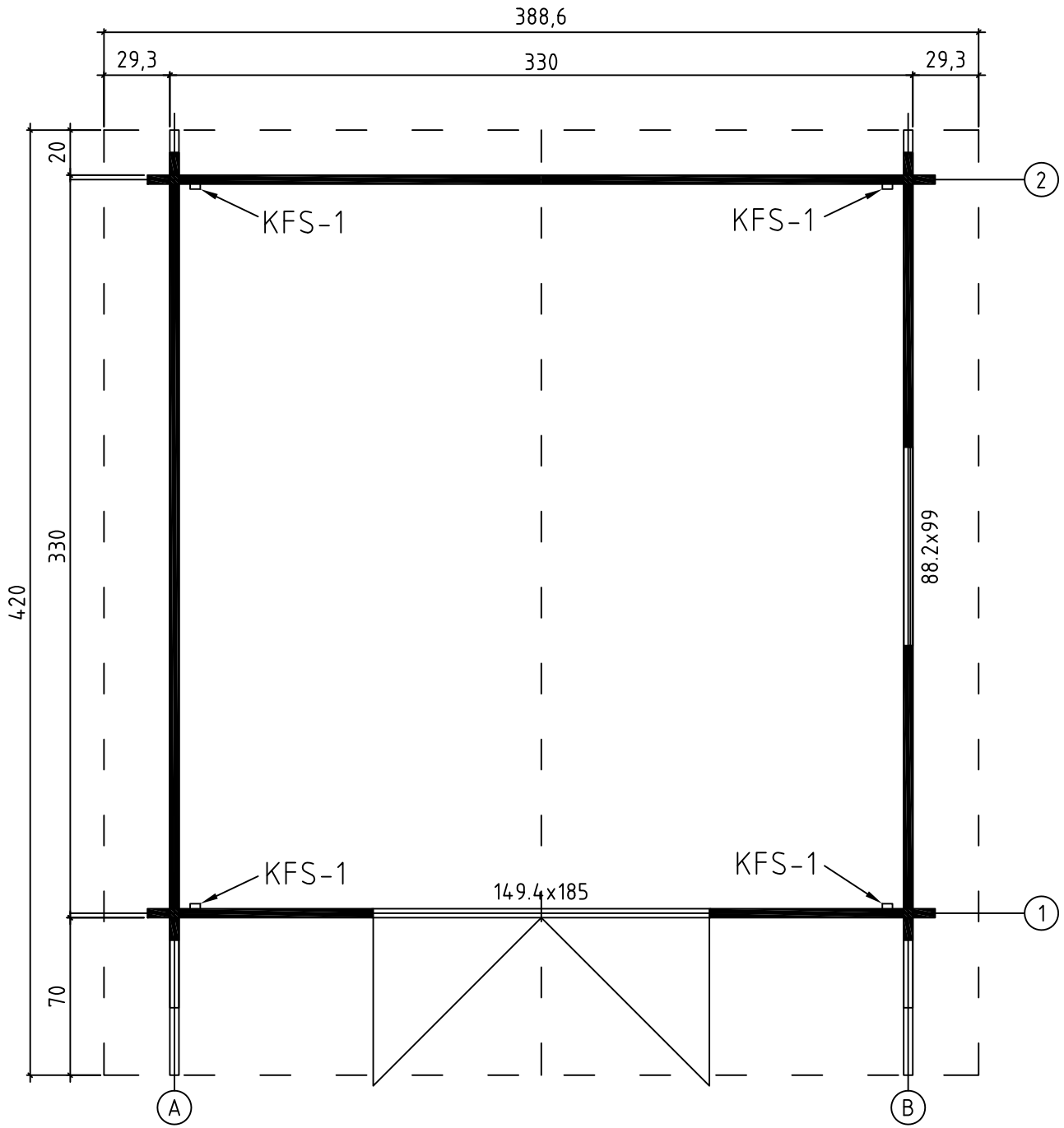


Art. Nr. 400296

1/6

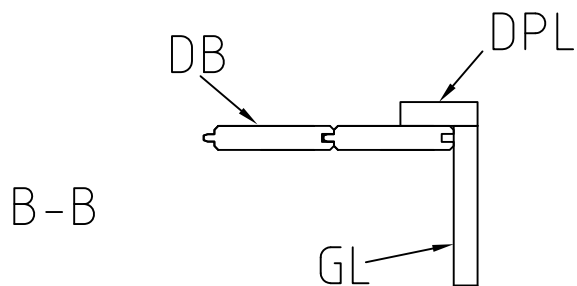
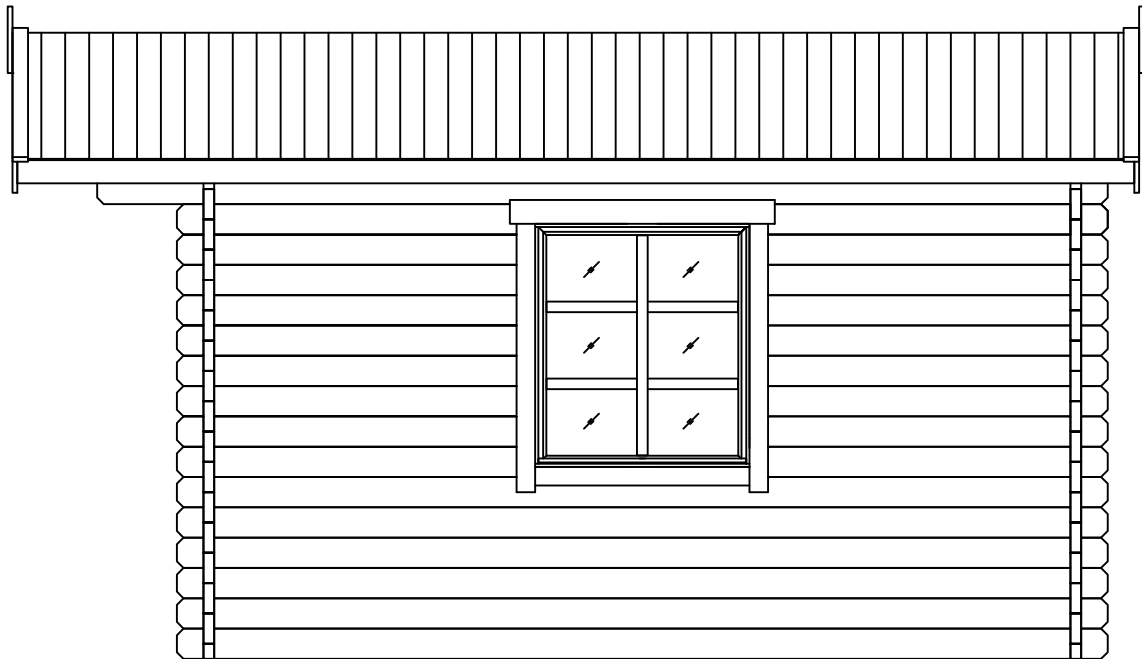
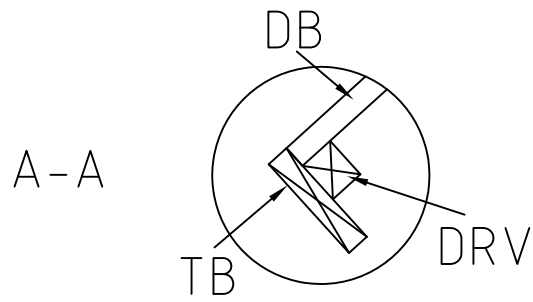
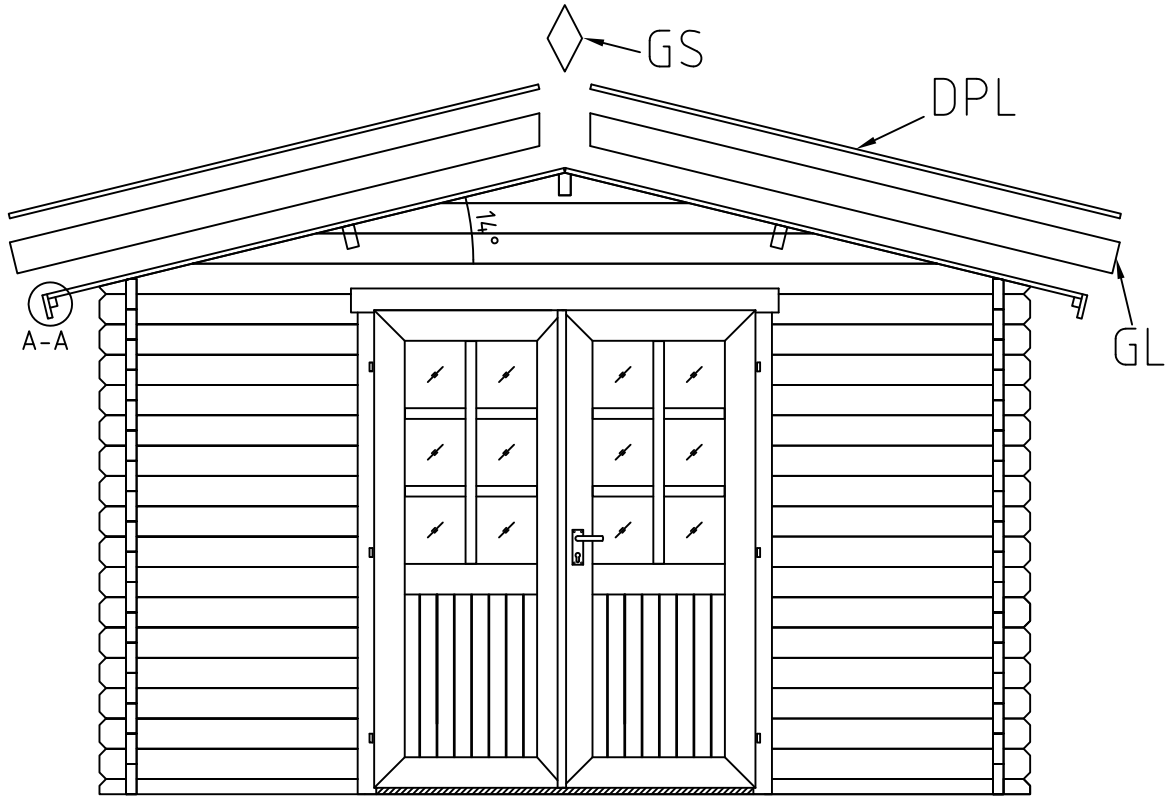


30.10.2017




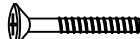
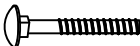
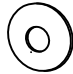
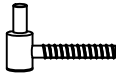
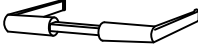
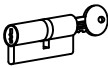
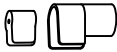


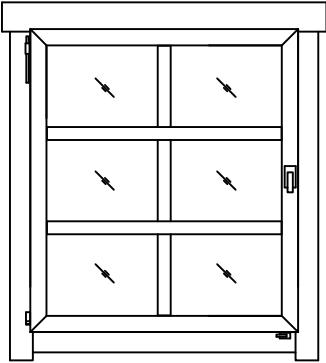
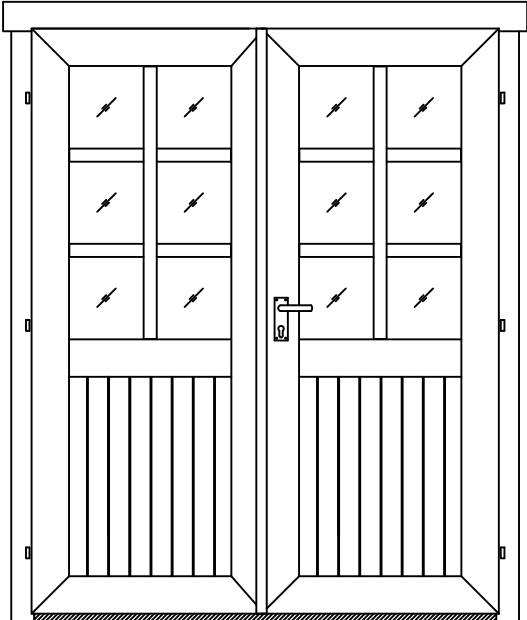
GROUNDPLAN - GRUNDPLAN - PLAN DE MASSE

Art.Nr. 400296





Pos	30.10.2017	Piecelist - Stücklist - Liste des composants Art.Nr. 400296	5/6	Q.	P. (mm)	L. (mm)
001				2	40x57	998
002				32	40x114	998
007				1	40x57	3500
008				37	40x114	3500
009				2	40x114	3800
010				1	40x120	4200
011				18	40x114	1305
012				1	40x120	4200
W1-1 W2-1				2		
PR11		ROOF BEAM - DACHBALKEN - PANNE DE TOIT		1	44x140	4200
PR21		ROOF BEAM - DACHBALKEN - PANNE DE TOIT		2	44x140	4200
DB	ROOF BOARDS - DACHBRETTER - VOLIGES			94	90x18	2000
DPL	ROOFING FELT FILLET - DACHPAPPENLEISTE - - BAGUETTE DE FIXATION DU FEUTRE BITUMEUX			4	18x58	2050
TB	EAVES BOARD - TRAUFBRETT - BANDEAU DE TOIT			2	18x90	4200
DRV	ROOF EDGE REINFORCEMENT - DACHRANDVERSTÄRKUNG - - CORNIERE DE RENFORT DE BORD DE TOIT			2	28x34	4200
KFS-1	STORM PROTECTION - STURMLEISTE - - LATTE ANTI-TEMPETE			4	22x45	2050
GL	GABLE MOULDING - GIBELLEISTE - - PLANCHE DE RIVE			4	18x120	2050
GS	GABLE SEGMENT-DECKBLATT - LOSANGE DE FINITION			2		
SH40	HAMMER BLOCK - SCHLAGHOLZ - CALLE DE FRAPPE 40mm			1		300
FS	WINDOW HANDLE FITTINGS-FENSTERGRIFF - POIGNÉE D'OUVERTURE DE FENETRE			1		
HS3	SCREW FOR FILLET - SCHRAUBE ZUR BEFESTIGUNG TÜRLEISTE - - VIS D'ASSEMBLAGE DU CADRE DE PORTE			5	3x30	
HS41	SCREW FOR DOOR JAMB - SCHRAUBE FÜR TÜRRAHMEN - - VIS DE FIXATION POUR MONTANT DE PORTE			4	5x90	
TL5	SET OF DOOR LOCK COVERS - SCHLOSSBLENDEN - - SET DE GARNITURES DE SERRURE DE PORTE			1		
HS59	SCREW FOR DOORSTEP - SCHRAUBEN FÜR SWELLE - - VIS DE FIXATION DU SEUIL DE PORTE			3	4.5x65	

Pos	30.10.2017	Piecelist - Stücklist - Liste des composants Art.Nr. 400296	6/6	Q.	P. (mm)	L. (mm)
SFS		NUT FOR STORM PROTECTION - SCHRAUBENMUTTER FÜR STURMLEISTE - ÉCROU POUR LAME ANTI-TEMPETE		8	D6	
		BOLT FOR WINDOW HANDLE FITTINGS - BOLZEN FÜR FENSTERGRIFF BESCHLAG - BOULON POUR POIGNÉE D'OUVERTURE DE FENETRE		2		
BFS		BOLT FOR STORM PROTECTION - BOLZEN FÜR STURMLEISTE - - VIS POUR LAME ANTI-TEMPETE		8	6x70	
DFS		WASHER FOR STORM PROTECTION - DICHTSCHEIBE FÜR STURMLEISTE - - RONDELLE POUR LAME ANTI-TEMPETE		8	D6	
		MALE BOLT HINGE FOR DOOR - TÜRRIEGEL - - PARTIE MALE DE CHARNIERE DE PORTE		6	16/52	
TL4		DOOR HANDLE FITTINGS-TÜRGRIF - - GARNITURE DE POIGNÉE DE PORTE		1		
		CYLINDER -ZYLINDERSCHLOSS - CYLINDRE DE SERRURE		1	30/35	
		WINDOW/DOOR CROSS SLOT STRAIGHT (PLASTIC) - FENSTER/TÜREN EINSENWAREN - QUINCAILLERIE POUR PORTES ET FENETRES		18		
		NAIL FOR WINDOW/DOOR CROSS SLOT STRAIGHT - NÄGEL FÜR FENSTER/TÜREN EINSENWAREN - POINTE POUR QUINCAILLERIE POUR PORTES ET FENETRES		36	1.4x30	
		STRIKER FOR BARREL BOLT - HÜLSE FÜR GRENDELRIEGEL - GACHE AU SOL DU TARGETTE		2		
		WINDOW - FENSTER - FENETRE 882x990 SGC+E	AK.1.106.SSV.Pa	1		
						
		DOOR - TÜR - PORTE 1494x1850 SGC+E	TUK.2.056.SVP.MMPc	1		
						

+E

